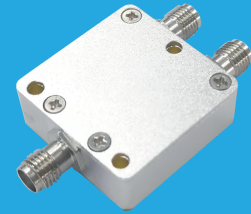


QPD2-4000-12000-20-S

2-Way, 4~12GHz

Features:
 * Small Size
 * Low Insertion Loss

Applications:
 * Amplifiers
 * Mixers
 * Antennas
 * Laboratory Test



Electrical

Frequency:	4~12GHz
Insertion Loss:	0.5dB max.
Input VSWR:	1.25 max.
Output VSWR:	1.25 max.
Isolation:	20dB min.
Amplitude Balance:	±0.1dB
Phase Balance:	±1°
Impedance:	50Ω
Power @SUM Port:	20W max.as divider 1W max. as combiner

Mechanical

Size ^{*1} :	28*28*10mm 1.102*1.102*0.394in
Connectors ^{*2} :	SMA Female
Mounting:	3-Φ2.8mm through-hole

[1] Exclude connectors.

[2] Female connectors can be replaced with male connectors on request.

Environmental

Operation Temperature:	-45~+85°C
Non-operating Temperature:	-55~+125°C

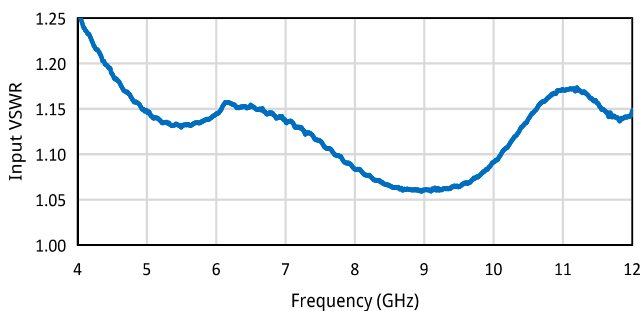
How To Order

[QPD2-4000-12000-20-S](#)

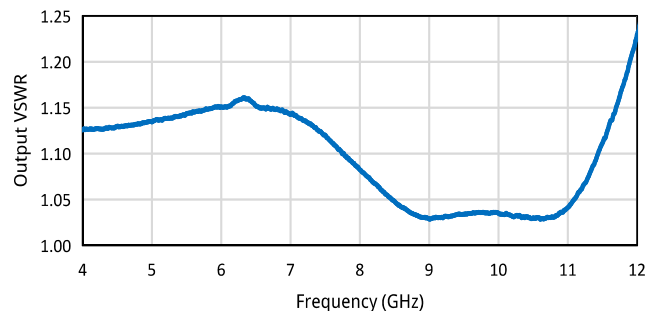
Customization is available upon request.

Typical Performance Curves

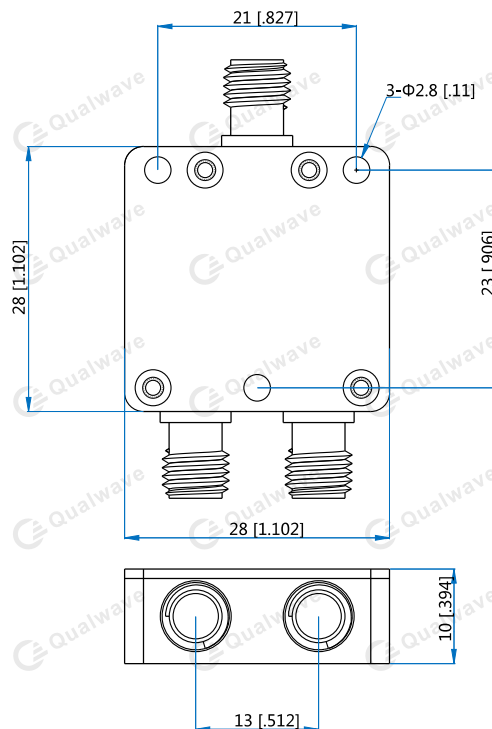
Input VSWR vs. Frequency



Output VSWR vs. Frequency



Outline Drawings

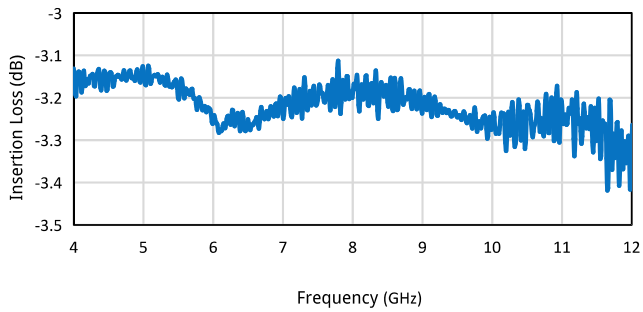


Unit: mm [in]

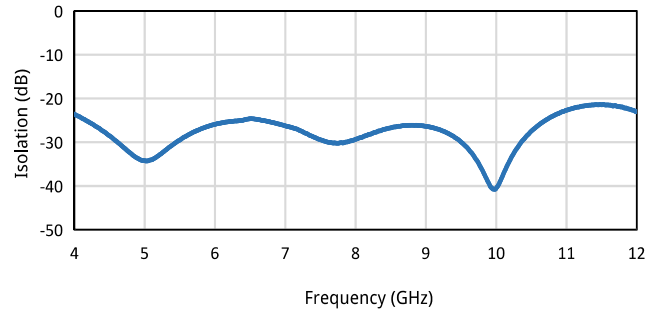
Tolerance: ±0.5mm [±0.02in]

2-Way Power Divider/Combiner

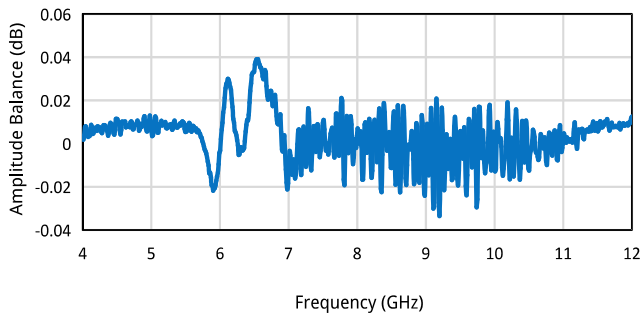
Insertion Loss vs. Frequency



Isolation vs. Frequency



Amplitude Balance vs. Frequency



Phase Balance vs. Frequency

