

QHC9-80-1000-K2-N

0.08~1GHz, 200W

Features:
 * Broadband
 * High Power
 * Low Insertion Loss

Applications:
 * Amplifiers
 * Transmitter
 * Laboratory Test
 * Radar

Electrical

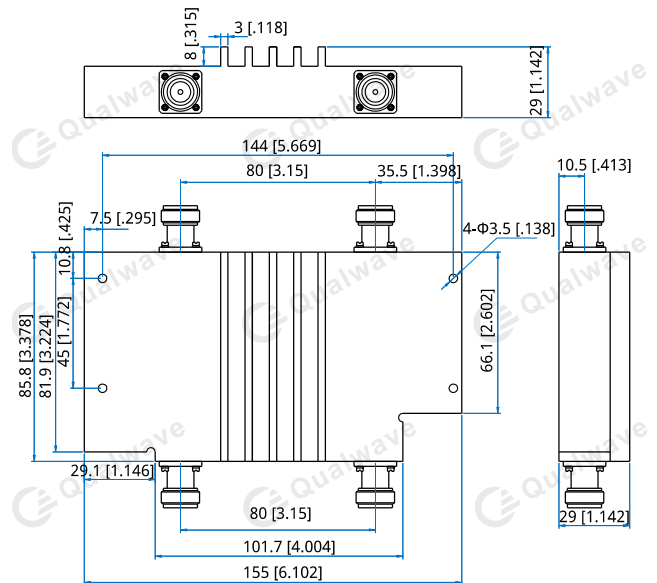
Frequency:	0.08~1GHz
Insertion Loss:	0.9dB max.
VSWR:	1.35 max.
Isolation:	16dB min.
Amplitude Balance:	±1.3dB max.
Phase Balance:	±8° max.
Average Power:	200W max.
Impedance:	50Ω

Mechanical

Size ^{*1} :	155*85.8*29mm 6.102*3.378*1.142in
RF Connectors:	N Female
Mounting:	4-Φ3.5mm through-hole

[1] Exclude connectors.

Outline Drawings



Unit: mm [in]
 Tolerance: ±0.5mm [±0.02in]

How To Order

QHC9-80-1000-K2-N

Customization is available upon request.