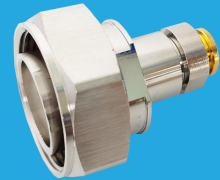


QC7-MB-A800-1

7/16 DIN Male

Features:
* Low VSWR

Applications:
* Wireless
* Radar
* Instruments
* Electronics



Electrical

Frequency:	DC~6GHz
Impedance:	50Ω
VSWR:	1.3 max.
Impedance of Dielectric:	5000MΩ min.
Voltage Withstand:	1000V

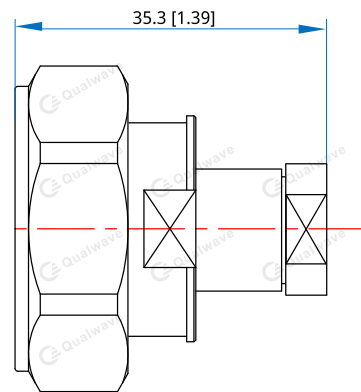
Mechanical

RF Connector:	7/16 DIN male
Mating Cable:	QA800
Outer Conductor:	Ternary plated brass
Dielectric:	PTFE
Inner Conductor:	Gold plated brass

Environmental

Temperature:	-55~+165°C
--------------	------------

Outline Drawings



Unit: mm [in]
Tolerance: ±0.2mm [±0.008in]

How To Order

QC7-MB-A800-1

Customization is available upon request.