

QAPA

SMP to SSMA

Features:
* Low VSWR

Applications:
* Wireless
* Transmitter
* Laboratory Test
* Radar

Electrical

Frequency: DC~18GHz
VSWR: 1.25 max.
Impedance: 50Ω

Mechanical

RF Connectors: SMP
SSMA
Outer Conductor: Gold plated brass
Dielectric: PTFE
Inner Conductor: Gold plated beryllium copper

Environmental

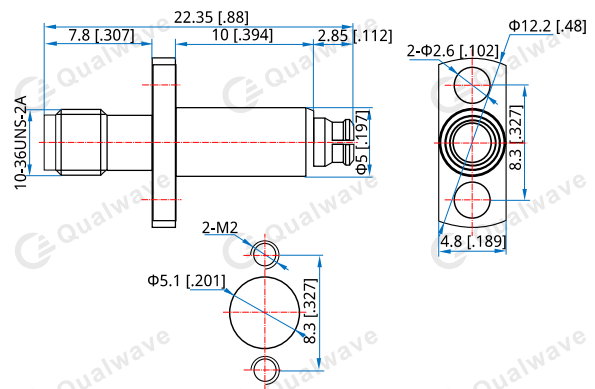
Temperature: -50~+85°C

How To Order

QAPAL-FF - SMP (f) to SSMA (f), Flange mount, Outline A

Customization is available upon request.

Outline Drawings



Outline A

Unit: mm [in]

Tolerance: ±0.2mm [±0.008in]