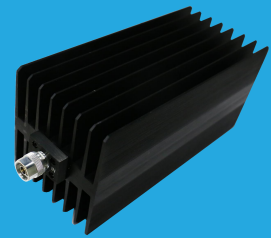


QCT18K2

DC~18GHz, 200W

Features:
 * Low VSWR
 * Broadband

Applications:
 * Transmitters
 * Antennas
 * Laboratory Test
 * Impedance Matching



Electrical

Frequency Range:	DC~18GHz
Average Power* ¹ :	200W@25°C
Impedance:	50Ω
Peak Power:	5KW (5μS pulse width, 2% duty cycle) @DC~12.4GHz 1KW (5μS pulse width, 10% duty cycle) @18GHz

[1] Derated linearly to 10W@120°C.

VSWR

Frequency (GHz)	VSWR (max.)
DC~4	1.2
DC~8	1.25
DC~12.4	1.35
DC~18	1.4

Mechanical

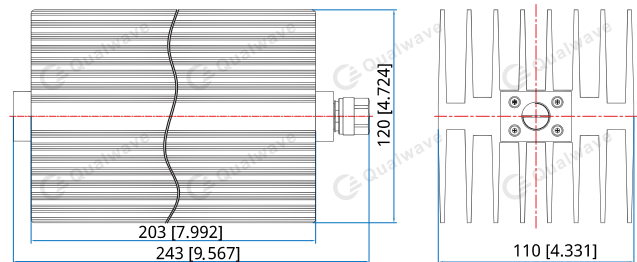
Size* ² :	203*110*120mm 7.992*4.331*4.724in
Connector:	N Male

[2] Exclude connectors.

Environmental

Temperature:	-55~+125°C
--------------	------------

Outline Drawings



Unit: mm [in]
 Tolerance: ±1mm [±0.04in]

How To Order

QCT18K2-X-Y

X: Frequency in GHz

Y: Connector type

Connector naming rules:

N - N

Examples:

To order a termination, DC-18GHz, N male, specify QCT18K2-18-N

Customization is available upon request.