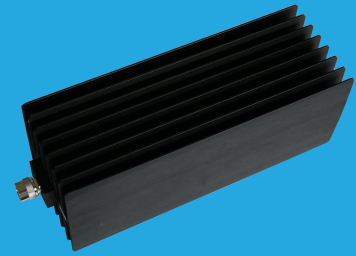


QCT18K3

DC~18GHz, 300W

Features:
 * Low VSWR
 * Broadband

Applications:
 * Transmitters
 * Antennas
 * Laboratory Test
 * Impedance Matching



Electrical

Frequency Range:	DC~18GHz
Average Power* ¹ :	300W@25°C
Impedance:	50Ω
Peak Power:	5KW (5μS pulse width, 3% duty cycle) @DC~12.4GHz 1KW (5μS pulse width, 15% duty cycle) @18GHz

[1] Derated linearly to 15W@120°C.

VSWR

Frequency (GHz)	VSWR (max.)
DC~4	1.2
DC~8	1.25
DC~12.4	1.35
DC~18	1.45

Mechanical

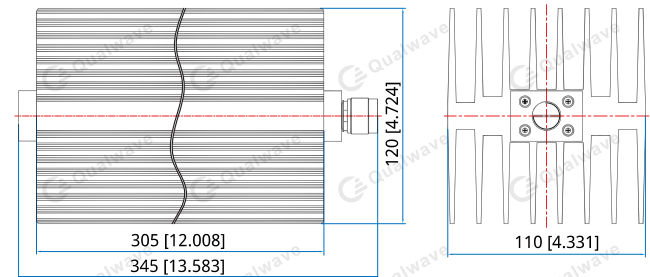
Size* ² :	305*120*110mm 12.008*4.724*4.331in
Connector:	N

[2] Exclude connectors.

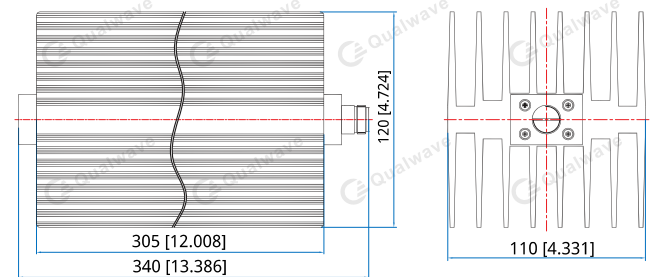
Environmental

Temperature:	-55~+125°C
--------------	------------

Outline Drawings



Outline A



Outline B

Unit: mm [in]
 Tolerance: ±3mm [±0.12in]

How To Order

QCT18K3-X-Y

X: Frequency in GHz

Y: Connector type

Connector naming rules:

N - N male (Outline A)

NF - N female (Outline B)

Examples:

To order a termination, DC-12.4GHz, N male, specify QCT18K3-12.4-N

Customization is available upon request.