

# QCT18K4

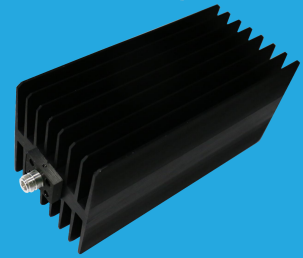
DC~18GHz, 400W

**Features:**

- \* Low VSWR
- \* High Attenuation Flatness

**Applications:**

- \* Wireless
- \* Transmitter
- \* Laboratory Test
- \* Radar



**Electrical**

Frequency:	DC~18GHz
Impedance:	50Ω
Average Power* <sup>1</sup> :	400W@25°C
Peak Power:	5KW (5μS pulse width, 4% duty cycle) @DC~12.4GHz 1KW (5μS pulse width, 20% duty cycle) @18GHz

[1] Derated linearly to 20W@120°C.

**VSWR**

Frequency (GHz)	N
DC~4	1.2
DC~8	1.25
DC~12.4	1.35
DC~18	1.45

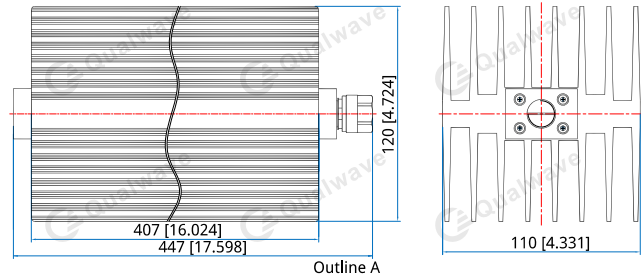
**Mechanical**

RF Connectors: N Male

**Environmental**

Temperature: -55~+125°C

**Outline Drawings**



Unit: mm [in]      Tolerance: ±2mm [±0.08in]

**How To Order**

**QCT18K4-X-Y**

X: Frequency in GHz

Y: Connector type

Connector naming rules:

N - N male (Outline A)

NF - N female

Examples:

To order a termination, DC-12.4GHz, N male, specify QCT18K5-12.4-N

Customization is available upon request.