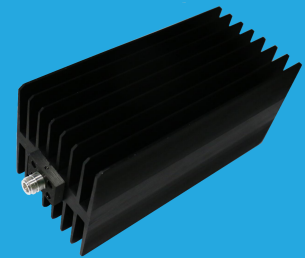


QCT18K5

DC~18GHz, 500W

Features:
 * Low VSWR
 * Broadband

Applications:
 * Transmitters
 * Antennas
 * Laboratory Test
 * Impedance Matching



Electrical

Frequency Range: DC~18GHz
 Average Power*¹: 500W@25°C
 Impedance: 50Ω
 Peak Power: 5KW (5μS pulse width, 5% duty cycle) @N DC~12.4GHz
 1KW (5μS pulse width, 25% duty cycle) @N 18GHz

[1] Derated linearly to 25W@120°C.

VSWR

Frequency (GHz)	N	7/16 DIN
DC~4	1.2	1.2
DC~6	-	1.25
DC~8	1.25	-
DC~12.4	1.35	-
DC~18	1.6	-

Mechanical

Size*²: 509*120*110mm
 20.039*4.724*4.331in
 Connector: N, 7/16 DIN

[2] Exclude connectors.

Environmental

Temperature: -55~+125°C

How To Order

QCT18K5-X-Y

X: Frequency in GHz

Y: Connector type

Connector naming rules:

N - N male(Outline A)

NF - N female

7 - 7/16 DIN male(Outline B)

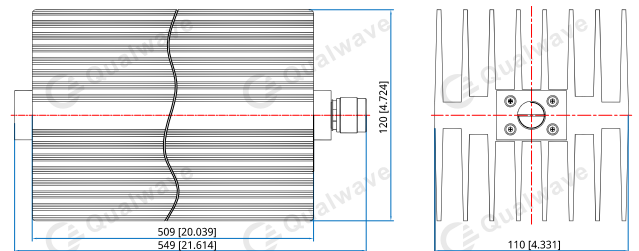
7F - 7/16 DIN female

Examples:

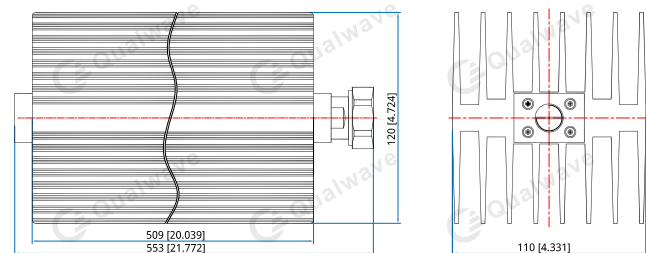
To order a termination, DC-12.4GHz, N male, specify QCT18K5-12.4-N

Customization is available upon request.

Outline Drawings



Outline A



Outline B

Unit: mm [in]

Tolerance: ±1mm [±0.04in]