

# QDI1313M

## High Power, High Isolation

- |  |  |
|--|--|
| <b>Features:</b><br>* High Power<br>* High Isolation<br>* Low Insertion Loss<br>* Low VSWR | <b>Applications:</b><br>* Wireless<br>* Radar<br>* Laboratory Test |
|--|--|

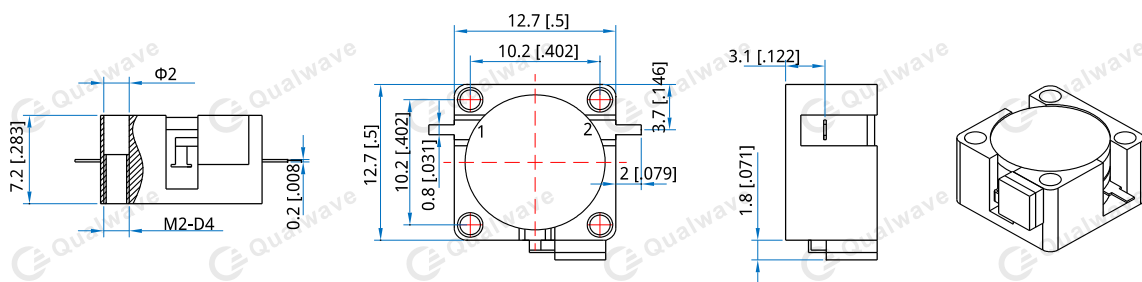
### Description

QDI1313M series Drop-In Isolators cover frequency range 1700~6000MHz. High power, high isolation and low insertion loss make it ideal for a lot of applications like amplifiers, transceivers, etc.

### Specifications

Frequency (MHz)	Bandwidth (MHz)	Insertion Loss (dB Max.)	Isolation (dB Min.)	VSWR (Max.)	Fwd Power (W Max.)	Rev Power (W)	Temperature (°C)
1710~1785	75	0.30	23.0	1.20	60	20	-30~+70
1805~1880	75	0.30	23.0	1.20	60	20	-30~+70
1805~1920	115	0.40	20.0	1.25	60	20	-30~+70
1880~1920	40	0.30	23.0	1.20	60	20	-30~+70
2110~2170	60	0.30	23.0	1.20	60	20	-30~+70
2300~2400	100	0.30	23.0	1.20	60	20	-30~+70
2400~2500	100	0.30	23.0	1.20	60	20	-30~+70
2500~2700	200	0.30	23.0	1.20	60	20	-30~+70
2700~2900	200	0.30	23.0	1.20	60	20	-30~+70
2900~3100	200	0.30	23.0	1.20	60	20	-30~+70
3000~5000	200	0.35	20.0	1.25	60	20	-30~+70
3250~3450	200	0.35	20.0	1.25	60	20	-30~+70
3300~3500	200	0.35	20.0	1.25	60	20	-30~+70
3500~3650	150	0.35	20.0	1.25	60	20	-30~+70
5100~5900	800	0.45	18.0	1.30	60	20	-30~+70
5700~5900	200	0.40	20.0	1.25	60	20	-30~+70

### Outline Drawings



Unit: mm [inch]      Tolerance: ±0.2mm [±0.008in]

**Mechanical**

---

Size*1:	12.7*12.7*7.2mm 0.5*0.5*0.283in
Connector Type:	Strip line
Mounting:	Φ2 M2, depth 4mm

[1] Exclude connectors and terminations.

**Direction Naming Rules:**

- 1 - Clockwise
- 2 - Anticlockwise

**How To Order****QDI1313M-V-W-X-Y-Z**

- V: Start frequency in MHz
- W: Stop frequency in MHz
- X: Forward Power in W
- Y: Reverse Power in W
- Z: Direction type

**Examples:**

To order a QDI1313M series Isolator, 3300~3500MHz, Forward power 60W, Reverse power 20W, Clockwise, specify QDI1313M-3300-3500-60-20-1.

Customization is available upon request.